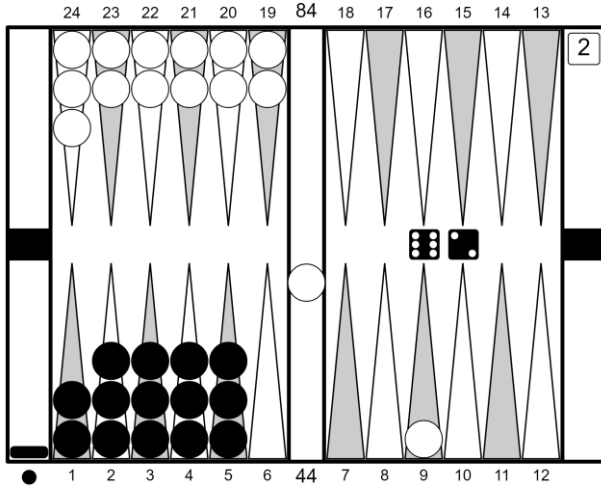


Summer Seminar in Brighton 2019

18th August 2019 by Michihito Kageyama

Question 1

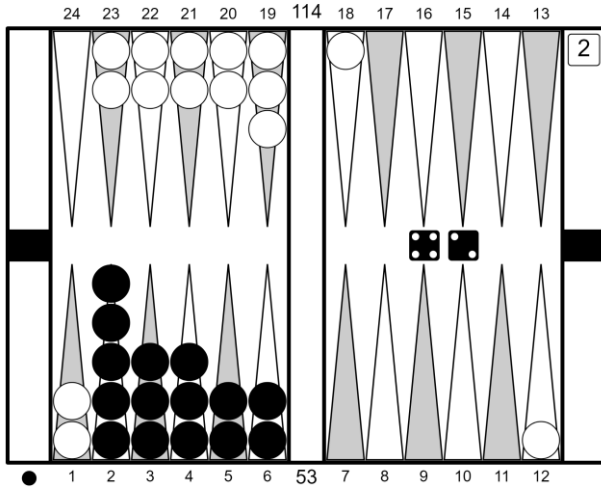
XGID=aBCCCC---a-----bbbbbc-:1:-1:1:26:0:0:0:0:10



Note: Every diagram shows the pip count and the match score.

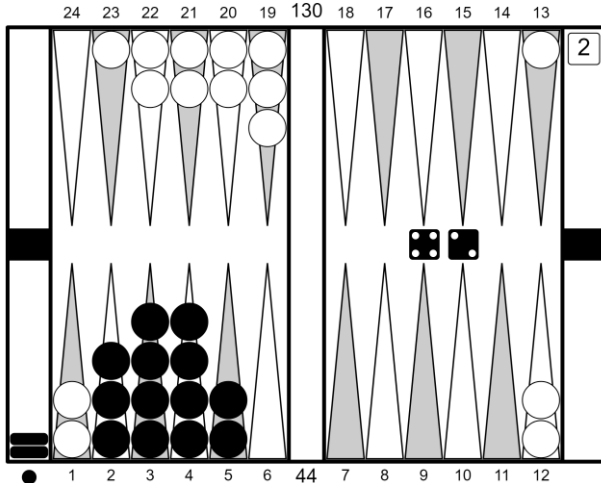
Question 2

XGID=-bECCBB-----a-----acbbbb--:1:-1:1:42:0:0:0:0:10



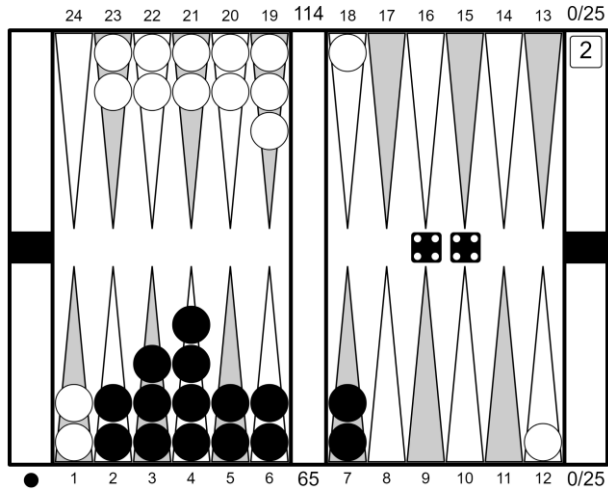
Question 3

XGID=-bCDDDB-----ba-----cbbba--:1:-1:1:24:0:0:2:0:10



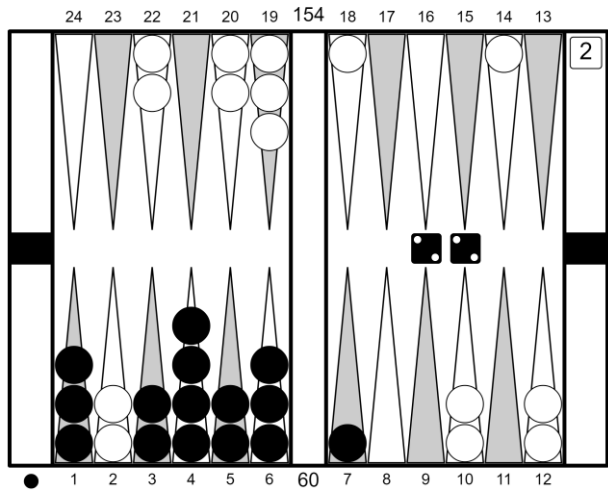
Question 4

XGID=-bBCDBBB-----a-----acbbb--:1:-1:1:44:0:0:0:25:10



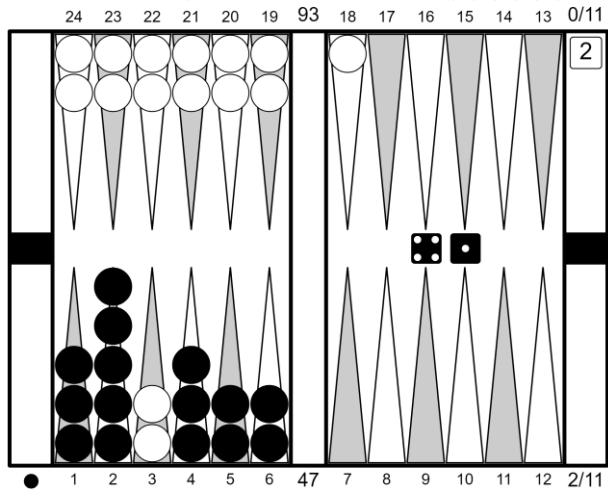
Question 5

XGID=-CbBDBCA--b-b-a---acb-b---:1:-1:1:22:0:0:0:0:10



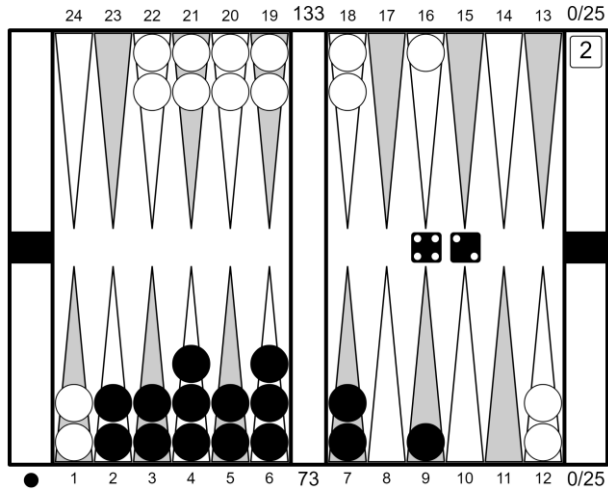
Question 6

XGID=-CEbCBB-----abbbbb--:1:-1:1:41:2:0:0:11:10



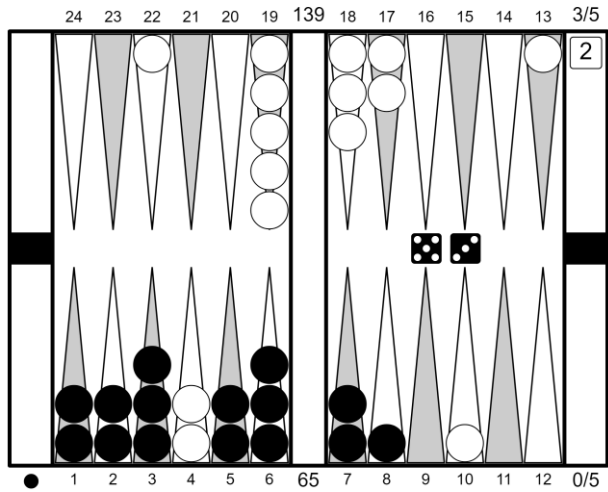
Question 7

XGID=-bBBCBCB-A--b---a-bbbb---:1:-1:1:24:0:0:0:25:10



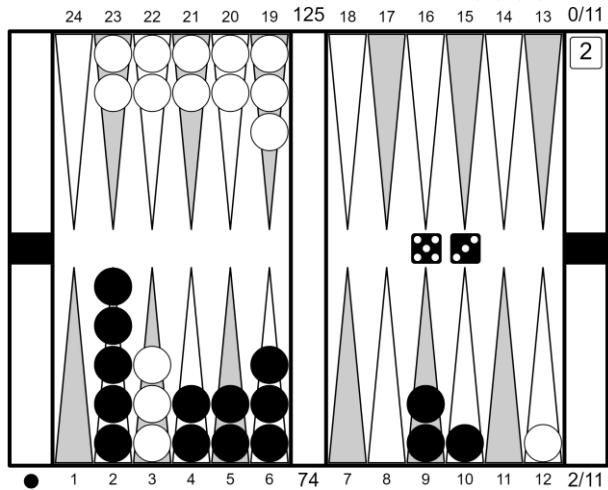
Question 8

XGID=-BBCbBCBA-a--a---bce--a---:1:-1:1:53:0:3:0:5:10



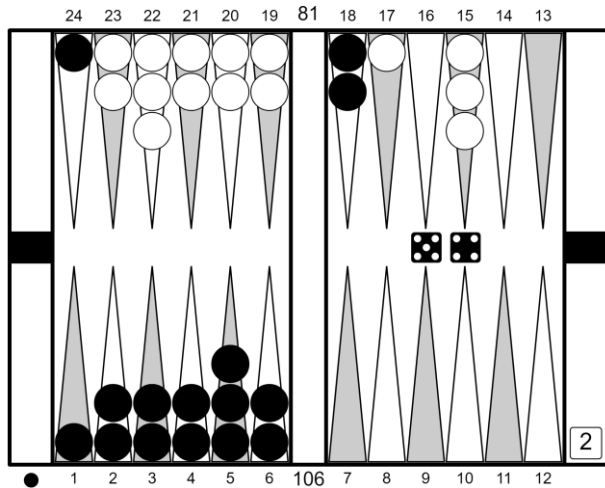
Question 9

XGID=---EcBBC--BA-a-----cbbb---:1:-1:1:53:2:0:0:11:10



Question 10

XGID=-ABBBCB-----c-aBbbbcba-:1:1:1:45:0:0:2:0:10



Why there is a mountain?

> It represents an important concept in bearing-off against ace-point game.

Answer:

the figure shows the difference between the best play and the 2nd play.

Question 1

0.03

5/0 2/0

Question 2

0.03

6/2 6/4

Question 3

0.100

4/0 2/0

Question 4

0.120

7/3(2) 6/2(2)

Question 5

0.050

7/3 5/3(2)

Question 6

0.030

6/2 6/5

Question 7

0.060

7/3 7/5

Question 8

0.040

8/5 7/2

Question 9

0.130

9/4 9/6

Question 10

0.100

18/13 18/14